


SELECCIÓN ÚNICA

55 ÍTEMS

Revisado por Nathalia Arias y Geanina Espinoza

Read the text.

BOWLING EQUIPMENT



This is an indoor sport practiced by people of all ages. The equipment required for bowling consists of the following items:

A bowling ball: It is necessary for the bowler to be able to pick up the bowling ball with two hands and swing it back and forth with one hand with ease. The fingers and thumb should fit relaxed inside the holes. The weight of the ball, ranging from 6 to 14 pounds, will be determined by the bowlers. The bowler can't play properly without the right ball which is the most important piece of the bowling equipment.

A pair of bowling shoes: Bowling shoes allow bowlers to slide their feet properly along the floor.

A bowling bag: It is used to keep one's own ball after playing.

A rosin bag: It is used to provide athletes with dry hands.

A bowling towel: It is used to remove dirt or oil from the ball to keep it clean.

Adapted from www.specialolympics.org

Choose the appropriate option to answer each question based on the previous text.
(Items from 1 to 4)

1) Who can practice this sport?

- A) Only men
- B) Only women
- C) People of all ages
- D) Young women and kids

Se hace alusión a la pregunta: ¿Quién puede jugar este deporte? Como se puede apreciar al inicio del texto, se menciona que se trata de un deporte que puede ser practicado por personas de todas las edades, de modo que la respuesta correcta es la C.

2) What does the bowler need to slide properly? A _____

- A) rosin bag
- B) bowling ball
- C) pair of bowling shoes
- D) pair of bowling towels

A la hora de repasar el equipamiento requerido para practicar este deporte, es posible observar que en la descripción de "un par de zapatos para bolos", se menciona que estos le permitirán al jugador desplazarse apropiadamente, de modo que la respuesta es la C.

3) What is the most important item required to practice bowling?

- A) A bag
- B) Some towels
- C) A pair of shoes
- D) The appropriate ball

Al repasar lo expuesto en el texto, es posible observar como, dentro de la descripción de bola para bolos, se menciona casi al final del párrafo que esta es la pieza más importante del equipamiento, por lo que la respuesta correcta es la D

4) What is a bowling towel used for? To _____

- A) clean the ball
- B) swing the ball
- C) pick up the equipment
- D) dry one of the bowler's hands

En la descripción de la toalla para bolos, se menciona que la misma es utilizada para remover suciedad o aceite de la bola, es decir, para mantenerla limpia, de modo que la respuesta correcta es la A

Read the dialogue.

Situation: Stuart and his friends are going out. He calls Amy.

Stuart: Amy. Hi, how are you doing?

Amy: Oh, hi Stuart. School is so crazy these days, and when I'm not at school, I'm at work.

Stuart: Hey, listen. **I'm calling you because** I'm getting together with Sara and Paul and some other friends tonight. **We're going out** to eat and then see a movie. **Why don't you come with us?** **5**

Amy: Hey, I'd love to, but I have to study for a test tomorrow.


Stuart: Ah, come on. We're planning on having dinner around 6:30 and **then seeing a movie at 7:30.** **6**

Amy: I don't think I should. I haven't been feeling well lately.

Stuart: Yeah, it's because you study too much. Come on! Relax. And **it's Sara's birthday, too.** And **we're planning a birthday party for her** after the movie. **7**

Amy: Oh. **Okay.** **8**

Stuart: Great. I'll pick you up at 6:00 p.m.



Adapted from www.esl-lab.com/nightlife/nightlifesc1.htm

Choose the appropriate option to complete each sentence based on the previous dialogue. (Items from 5 to 8)

5) Stuart called Amy to _____.

- invite her to go out**
- B) ask her a question about her job
- C) invite her to Paul's birthday party
- D) ask her some questions about an exam

En el principio del diálogo se aprecia como Stuart le indica a Amy que saldrá con unos amigos en común, y le invita a unirse a ellos en la noche, de modo que la respuesta correcta es la A

6) After having dinner, Stuart and his friends are _____.

- A) going to pick up Amy
- B) going to study together
- C) planning to see a movie
- D) celebrating Amy's birthday

Cuando Stuart intenta convencer a Amy, le cuenta que sus planes son ir a cenar y luego ir a ver una película, de modo que la respuesta correcta es la C.

7) Stuart and his friends are _____.

- A) meeting Amy at 7:30
- B) celebrating Paul's birthday
- C) studying for a test tomorrow
- D) planning a birthday party for Sara

Stuart le cuenta a Amy que es el cumpleaños de Sara, y que piensan planear una fiesta después de la película, por lo que la respuesta correcta es la D.

8) Amy decides _____.

- A) to stay home
- B) not to meet up with her friends
- C) not to accept Stuart's invitation
- D) to join Stuart and his friends tonight

Al final del diálogo Amy acepta la invitación al indicar un "Okay", de modo que la respuesta correcta es la D.

Read the dialogue.

Situation: Silvia and Sui talk about their favorite singers and music.

Sui: What are you listening to Silvia?

Silvia: I'm listening to *Woman No Cry* from Bob Marley. I love him, and his music is great. He used to play in the band The Wailers. **10**

Sui: I like his music, too. But the song that I like the most is *Three Little Birds*. **9**
I also like *I Shot the Sheriff*.

Silvia: Those songs are amazing. Actually, his music actually was very influenced by social problems in his homeland Jamaica.


Sui: Another interesting fact is that he had eleven children with different women, but he just married Rita Marley in 1966.

Silvia: Yes, I knew about that. **11**

Sui: But he died very young. He was only 36 years old. His son Ziggy Marley has followed his footsteps. He and three of his brothers and sisters formed a band called The Melody Makers, and they played at their father's funeral.

Silvia: How come? How do you know that much about them?

Sui: I love their music. Reggae is my passion. **12**



Choose the appropriate option to complete each sentence based on the previous dialogue.
(Items from 9 to 12)

9) Sui's favorite song is _____.

- A) The Wailers
- B) *Woman No Cry*
- C) *I Shot the Sheriff*
- D) *Three Little Birds*

En el diálogo, Sui indica que le gusta la música de Bob Marley y que de hecho, su canción favorita es "Three Little Birds", aunque otras también le gustan pero no tanto, de modo que la respuesta correcta es la opción D.

10) Bob Marley only sang with _____.

- A) The Wailers
- B) Ziggy Marley
- C) The Melody Makers
- D) his bothers and sisters

A principios del diálogo, Silvia habla sobre Bob Marley, y menciona que este tocaba con la banda "The Wailers", de modo que la respuesta correcta es la opción A.

11) During his life, Bob Marley _____.

- A) had no children
- B) had only one child
- C) married different women.
- D) married only one woman

Sui conoce mucho sobre la vida de Bob Marley, y le cuenta a Silvia que este hombre tuvo muchos hijos de distintas mujeres, pero solo se casó con Rita Marley, de modo que la respuesta correcta es la opción D.

12) Sui is really a fan of _____.

- A) reggae music
- B) Bob Marley's wife
- C) The Melody Makers
- D) the social problems in Jamaica

Al final del diálogo, Sui dice que el Reggae es su pasión, de modo que la respuesta correcta es la opción A.

Read the text.

A COSTA RICAN STAR

Deborah Nowalski Kader, better known by her stage name, Debi Nova, is a Costa Rican singer-songwriter who resides in Los Angeles. She has been involved in six projects nominated for a Grammy award. She has also collaborated with artists including Brazilian singer Sérgio Mendes; the American group the Black Eyed Peas; Puerto Rican singer, Ricky Martin and Venezuelan singer-songwriter, Franco De Vita.



Debi was born in San José, Costa Rica on August 6, 1980, but she is of Polish Jewish descent. She started playing the piano at age four, and played classical music for ten years until she became a singer-songwriter and a multi-instrumentalist at the age of 14.

14 She moved to Los Angeles at age 17, when she signed her first record deal. She is a graduate of LAMA College for Music Professionals in Pasadena, California.

Adapted from the Internet

Choose the appropriate option to complete each sentence based on the previous text. (Items from 13 to 16)

13) Currently, Debi Nova lives in _____.

- A) Brazil
- B) Poland
- C) Costa Rica
- D) Los Angeles

En el primer párrafo del texto se introduce a Debi Nova, y entre otros datos, se menciona que la artista reside en Los Angeles, de modo que la respuesta correcta es la opción D.

14) Debi Nova has developed her musical career _____.

- A) as an amateur singer
- B) at an international level
- C) at a national level exclusively
- D) as a non-professional songwriter

Como se puede ver en el texto, la artista ha tenido una importante trascendencia con grupos y artistas internacionales, además, realiza su primer disco en Los Ángeles, de modo que la respuesta correcta es la B.

15) Debi Nova started showing her musical talent _____.

- A) at an early age
- B) at a show in Los Angeles
- C) when she was a teenager
- D) when she moved to Los Angeles

En el texto se hace mención sobre como la artista toca el piano desde los cuatro años, de modo que la respuesta correcta es la A.

16) When Debi was fourteen years old, she _____.


- A) started playing the piano
- B) won her first Grammy award
- C) moved to Los Angeles to study music
- D) already knew how to play different instruments

En el texto se indica que la artista se convierte en cantante, compositora y capaz de tocar múltiples instrumentos a los 14 años, de modo que la respuesta correcta es la opción D

Read the information.

SAFETY INSTRUCTIONS WHEN USING A BLENDER

1. Always hold the container down with one hand while processing. 17
2. Never leave a blender while it is processing. If the container turns while the motor is on, turn it off immediately and place the container properly on the base. 18
3. Do not wash any part of the container in an automatic dishwasher. 19
4. Do not fill the blender up to the top to avoid any spills while processing. Overfilling may cause the container to break and could result in injury. 20



Adapted from a manual

Choose the appropriate option to complete each sentence based on the previous information.
(Items from 17 to 20)

17) What's a good recommendation while processing? To _____.

- A) wash the motor
- B) turn off the blender
- C) hold the container down
- D) leave the blender while it is working

En el punto 1 de las instrucciones, se menciona que siempre sostenga el contenedor hacia abajo con una mano mientras está procesando, de modo que la respuesta correcta es la opción C.

18) What is not convenient to use when cleaning a blender?

- A) A motor for the container
- B) A blender to process food
- C) The container for the food
- D) A dishwasher to clean the motor

En el punto 3 se indica que no se debe lavar ninguna parte en una lavadora automática, de modo que la respuesta correcta es la opción D.

19) What's a safety instruction people should follow? To _____.

- A) avoid overfilling the container
- B) place the food in the container
- C) wash the base of the container
- D) let the food spill from the container

En el punto 4 se menciona que no llene la batidora hasta el tope debido a que se pueden generar salpicaduras, y además, podría romper el contenedor y causar lesiones o heridas a las personas, de modo que la respuesta correcta de la pregunta 19 es la A, y en la 20 es la C.

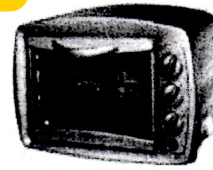
20) What makes a container break? By putting _____ of food in it.

- A) all kinds
- B) small pieces
- C) a great amount
- D) a small quantity

Read the text.

AN ELECTRIC OVEN

A conventional electric oven usually has its heating elements on both top and bottom sides. Food is baked or broiled by means of radiated heat. A conventional oven consists of a 2500W heating element and a fan in the back wall. Hot air is circulated using the fan inside the oven. Users can have more options for cooking. An electric oven may be equipped with a self-cleaning function which may raise the temperature to about 455 to 540 degrees Celsius. Food spills will turn into light ash. The oven door should be always locked automatically in order to avoid accidental opening. It allows sufficient space for ventilation as well as heat dissipation.



Adapted from www.heh.com

Choose the appropriate option to complete each sentence based on the previous text. (Items from 21 to 23)

21) How is food cooked in an electric oven? It is cooked _____

- A) with hot air
- B) with light ash
- C) by using radiated heat
- D) without causing any spill

En el texto se indica que la comida es horneada por medio de calor irradiado, de modo que la respuesta correcta es la opción C.

22) What part is inside of the electric oven? The _____

- A) fan
- B) doors
- C) buttons
- D) temperature knobs

En el texto se menciona que el aire caliente circula por medio del ventilador (fan) interno, las demás piezas se ubican de forma externa, por lo que la respuesta correcta es la A.

23) How does the self-cleaning function work? It _____.

- A) cools down the oven
- B) makes the temperature rise
- C) works as a ventilation system
- D) protects the oven from accidents

En el texto se menciona que el sistema de auto limpieza puede aumentar la temperatura de 455 a 540 grados Celsius, por lo que la respuesta correcta es la B.

Read the timetable.

TIMETABLE: SAN JOSÉ TO GUANACASTE (DIFFERENT DESTINATIONS)		
ROUTE	SCHEDULE	FARE
Santa Cruz	7:00 a.m., 9:45 a.m., 11:00 a.m., 12:30 p.m., 2:00 p.m., 4:30 p.m., 7:00 p.m.	€5.425
Nicoya ²⁷	5:30 a.m., 7:30 a.m., 10:00 a.m., 12:00 m.d., 1:00 p.m., 3:00 p.m., 5:00 p.m. ²⁵	€3.910
Samara	12:00 m.d., 5:00 p.m.	€4.470
Hojancha	2:30 p.m. ²⁴	€3.870
Tamarindo	11:30 a.m., 3:30 p.m.	€5.635 ²⁶

Adapted from www.empresaalfaro.com

Choose the appropriate option to complete each sentence based on the previous timetable.
(Items from 24 to 27)

24) There is just one bus to _____.

- A) Nicoya
- B) Samara
- C) Hojancha
- D) Tamarindo

En la tabla, el único destino con un único horario es el de Hojancha, la respuesta correcta es la C.

25) The latest bus to Nicoya departs _____.

- A) at noon
- B) at 5:00 p.m.
- C) late in the morning
- D) early in the afternoon

En la tabla, en la columna de horarios, es posible ver que el último bus hacia Nicoya sale a las 5 pm, por lo que la respuesta correcta es la B.

26) The bus ticket to Tamarindo _____.

- A) is the cheapest
- B) is the most expensive
- C) has two different fares
- D) costs less than five hundred colones

Al comparar la columna de precios de los diferentes destinos, es posible observar que el tiquete a Tamarindo es el más caro de todos, de modo que la respuesta correcta es la opción B.

27) The earliest departure is to _____.

- A) Nicoya
- B) Hojancha
- C) Tamarindo
- D) Santa Cruz

Al comparar la primera salida de todos los destinos, es posible identificar que el bus con salida más temprana es el de nicoya, pues es el único que sale a las 5:30 am.

Read the text.

LET'S GET AROUND

Costa Rica has many tourist attractions, where visitors can enjoy an unforgettable vacation. To get around, there are many options, but people

28 must verify that the transportation operator has all the permits and insurance required by law. They can choose between services such as:



PUBLIC TRANSPORTATION:



This is a collective passenger transportation where the travelers have to adapt to the schedules and routes offered by the operators. Costa Rica has a good quality public transportation service at accessible prices; mostly buses, but it also has a metropolitan train, taxis and a ferry on the Pacific coast.

SHUTTLE TRANSPORTATION:

The shuttle service is an excellent choice to travel between the main tourist destinations in the country. It is the most common way to travel among tourists, and the main advantage of shuttle services are their accessible prices. When tourists make a reservation, they will receive a confirmation email with all the details of your transportation service.



Adapted from www.interbusonline.com/costa-rica-transportation

Choose the appropriate option to complete each sentence based on the previous text. (Items from 28 to 31)

28) It is advisable for tourists to _____.

- A) travel only by bus
- B) exclusively use public transportation
- C) use transportation without any insurance
- D) check if the transportation company is authorized.

Al inicio del texto se menciona que las personas deben verificar que el operador del transporte tenga todos los permisos requeridos por la ley, de modo que la respuesta correcta es la opción D.

29) Public transportation in Costa Rica _____.

- A) is not of good quality
- B) offers expensive fares
- C) offers reasonable fares
- D) is not affordable for users

En el párrafo sobre el transporte público, se menciona al final que el servicio es de buena calidad y precios accesibles, por lo que la respuesta correcta es la opción C.

30) The most popular way to travel for tourists is by _____.

- A) train
- B) ferry
- C) shuttle
- D) public buses

A principios del tercer párrafo, se menciona que el transporte de sub contratado (Shuttle) es la mejor opción cuando se trata de actividades turísticas, de modo que la respuesta correcta es la C.

31) Once tourists reserve a shuttle, they _____.

- A) have to pay for insurance
- B) need to contact the shuttle operator
- C) have to verify if the service is authorized
- D) get an e-mail with the necessary information

A finales del tercer párrafo se menciona que una vez el turista realiza la reservación, se le envía un correo electrónico con la confirmación y la información necesaria con respecto al viaje, por lo que la respuesta correcta es la opción D.

Read the text.

A LAPTOP COMPUTER



A laptop computer is a small mobile computer which usually weighs 1 to 6 kilograms depending on its size, material and other factors. It is much smaller than a desktop computer. It usually runs on a single main battery or from an external

32 AC/DC adapter which can charge the battery while also supplying power to the computer itself. Many computers also have a 3-volt cell to run the clock and other processes in the event of a power failure.

As personal computers, laptops are capable of the same tasks as a desktop computer. Although they are typically less powerful for the same price. They contain components that are similar to their desktop counterparts and perform the same functions, but they are miniaturized and optimized for mobile use and efficient power consumption. Laptops usually have liquid crystal displays and most of them use different memory modules for their random access memory (RAM). In addition, to a built-in keyboard, they may utilize a touchpad or a pointing stick for input, though an external keyboard or mouse can usually be attached. 35

Adapted from the Internet

Choose the appropriate option to complete each sentence based on the previous text.
(Items from 32 to 35)

32) Laptops use _____ to charge the battery.

- A) a mouse
- B) a special keyboard
- C) random access memory
- D) an external AC/DC adapter

En el texto se hace mención de que la computadora portátil funciona con una batería principal o desde un adaptador externo AC/DC, que carga la batería, de este modo, la opción correcta es la opción D.

33) Laptop computers are able to _____.

- A) work just with batteries
- B) weigh more than 6 kilograms
- C) work faster than desktop computers
- D) do the same tasks as desktop computers

En el texto se menciona que las laptop son capaces de realizar las mismas tareas que una computadora de escritorio, por lo que la opción correcta es la D.

34) Laptop computers _____.

- A) are as large as desktop computers
- B) contain batteries with crystal components
- C) function differently compared to desktop computers
- D) are miniaturized and optimized for mobility and efficiency

En el texto se menciona que las laptop son minimizadas y optimizadas por razones de movilidad, por lo que la respuesta correcta es la opción D.

35) Instead of a keyboard, laptops may have _____.

- A) a battery
- B) a touchpad
- C) an external adapter
- D) a liquid crystal display


En el último párrafo, se menciona que se puede utilizar un touchpad o un puntero como métodos de entrada, de modo que la respuesta correcta es la B.

Read the information.

INTERNET SHOPPING

Amazon was one of the first websites to sell products on the Internet. **Jeff Bezos started the company.** He thought, "the World Wide Web is growing twenty times a year, and it's going to continue growing. **People are going to shop online.** For example, at the website, people can search for books about any subject, order them by credit card, and get them in the mail in two days within the USA. Within a few years, the company had 10 million customers and 18 million items such as **books, CDs, toys, electronics, DVDs,** home improvement products, software and video games. Today, people can buy almost everything at a **virtual shopping mall,** that is, a **group of stores from all over the world on the same webpage.** So, it functions like a group of stores all in one place.

Adapted from Interaction Access



Choose the appropriate option to complete each sentence based on the previous information. (Items from 36 to 39)

36) Jeff Bezos began _____.

- A) the World Wide Web
- B) offering products in stores
- C) the website called Amazon
- D) manufacturing home improvement products

Al inicio del texto se menciona que Jeff Bezos es quien inicia la compañía de Amazon, por lo que la respuesta correcta es la opción C.

37) Mr. Bezos introduced the concept of _____ online.

- A) getting money
- B) selling products
- C) using credit cards
- D) buying credit cards

Más adelante, se menciona como el fundador, por el comportamiento del mercado, sabía que las personas iban a iniciar a comprar por medio de la internet, de modo que la respuesta correcta es la opción B.

38) At Amazon, customers can _____.

- A) order different items
- B) create sites to shop online
- C) ask how a video game works
- D) get information about credit cards

En el texto se hace mención sobre como en la tienda en línea es posible ordenar libros, dvds, juguetes, etc. De modo que la respuesta correcta es la opción A.

39) A virtual shopping mall is a _____.

- A) store that doesn't ask for a credit card
- B) store with items from all over the world
- C) group of few stores from over the world
- D) group of stores located on the same webpage

Al final del texto, se explica que un mall virtual es un grupo de tiendas de todo el mundo ubicadas en un mismo sitio web. Por lo que la respuesta correcta es la opción C.

Read the dialogue.

Situation: Jessica and Michael are talking about Cocos Island.

Jessica: What are you reading about?

Michael: I'm reading about Cocos Island. I'm really impressed. I didn't know that the island is well-known internationally by scuba divers because of its marine resources. It's full of sharks, rays and dolphins. 40

Jessica: Yes, I recently heard about that. It's in fact a world heritage site.

Michael: Yes, it is. I'm also reading that the extremely wet climate and the ocean give the island a unique ecological characteristic. 41

Jessica: Does the reading say anything about the fauna of the island?

Michael: Sure, it says that there are two species of endemic lizards, and nearly 90 bird species have been reported, three of them are endemic. You know that they are just found on the island. 42

Jessica: Interesting! And of course, the sealife is abundant.

Michael: Sure, it is. And it also says that the island has five non-endemic species: pigs, deer, goats, cats and rats. All these mammals were introduced by humans.



Jessica: That's harmful to the ecosystem.

Michael: Of course, even though they aren't abundant and they have adapted perfectly, they aren't native animals and this damages the environment. 43

Jessica: Yes, I understand.

Choose the appropriate option to complete each sentence based on the previous dialogue. (Items from 40 to 43)

40) Why is Cocos Island widely recognized by scuba divers? Because it _____.

- A) has pleasant weather
- B) is a world heritage site
- C) is full of marine species
- D) has many endemic mammals

En el texto se especifica que la Isla del Coco es reconocida a nivel de buceo por su gran cantidad de recursos marinos, incluyendo tiburones, mantarrayas y delfines; por lo que la respuesta correcta es la opción C.

41) What is the weather like on the island? It _____.

- rains a lot
- is really dry
- does not rain much
- has pleasant weather

En el texto se menciona que el clima en la Isla es extremadamente mojado, por lo que la respuesta correcta es la opción A.

42) What are some endemic animals found on the island?

- Deer and pigs
- Sharks and dolphins
- Some lizards and birds
- Some birds and mammals

En el texto se menciona que existen dos tipos de especies de lagartijas endémicas y tres tipos de aves también. Por lo que la respuesta correcta es la opción C.

43) Why are non-endemic animals harmful to the island? Because they _____.

- are very abundant
- damage the ecosystem
- have human-like behavior
- are unable to adapt to the environment

Al final del texto se explica que han habido especies introducidas por medio del hombre a la Isla, y que esto ha causado daños al ecosistema, de modo que la respuesta correcta es la opción B.

Read the text.

TURTLE PROJECT IN COSTA RICA

Volunteers will work and be highly involved at protecting of turtles along the Costa Rican Pacific and Caribbean coasts. Opportunities are available working with the **44 Baula and Olive Ridley turtles.** The **Baula** turtle is the **45 largest** marine turtle in the world, and the **Olive Ridley** is the **46 smallest** of its species. Both populations are in sharp decline due to the **over-harvesting of eggs, beach development, fishing, pollution and poaching.** The work involves close contact with the turtles, and it is done under the supervision of a biologist. However, **47 volunteers are not required to have a background in biology.** Volunteers will be required to work at night when turtles lay their eggs and also be available to work during the day. Activities include beach patrolling, clearing the beach of obstacles, preparing nests, handling eggs, releasing baby turtles and counting eggs.



Adapted from the Internet.

Choose the appropriate option to complete each sentence based on the previous text. (Items from 44 to 47)

44) Volunteers will help preserve _____.

- A) only the *Baula* turtle
- B) the beaches of the country
- C) **two different kinds of turtles**
- D) the Costa Rican Caribbean coast

En el texto es posible observar que se menciona que es posible trabajar con tortugas baula y lora, por lo que la respuesta correcta es la opción C.

45) The Olive Ridley turtle is _____.

- A) abundant along the Pacific
- B) smaller than the *Baula* turtle
- C) already extinct in the country
- D) the biggest marine turtle in the world

En el texto se menciona que la tortuga "Oliver Ridley" es la más pequeña de las tortugas marinas, por lo que la respuesta correcta es la B.

46) The marine turtle population is declining due to the _____.

- A) lack of supervision of biologists
- B) correct management of beaches
- C) different turtle protection programs
- D) over-harvesting of eggs and poaching

Se menciona también, como la población de estas especies está en decrecimiento por motivo de la extracción de huevos de los nidos, contaminación de las playas y caza furtiva. Por lo que la respuesta correcta es la opción D.

47) Volunteers do not need to _____.

- A) work at night
- B) patrol the beaches
- C) work directly with the turtles
- D) have knowledge about biology


En el texto se indica que no es necesario un conocimiento previo en biología por parte de las personas voluntarias, por lo que la respuesta correcta es la opción D.

Read the text.

FISHING DECREE PROMISES ACTION

Calling it a “historic day” for Costa Rica’s fishing sector, **Agriculture and Livestock** **48**
Minister recently signed a decree that calls for the implementation of the National
Fishing Plan, an effort to guide the country toward more sustainable fishing
practices. **It was designed by Incopescas officials working with the fishing sector.** **50**
The 10-year plan **51** seeks to establish policy, guiding countrywide fishing and
aquaculture practices, said the president of the Costa Rican
Fisheries Institute (Incopescas).

The plan responds to Article 3 of Costa Rica’s Fishing and
Aquaculture Law, which instructs the government to develop
policies to **protect national marine resources, promote**
responsible fishing, and conduct research and training
programs. **49**



Adapted from www.ticotimes.net

Choose the appropriate option to answer each question based on the previous text.
(Items from 48 to 51)

48) Which institution executed the fishing decree? The _____.

- A) Oceans Commission
- B) Environment Ministry
- C) Costa Rican Fisheries Institute
- Agriculture and Livestock Ministry**

Al inicio del texto, se lee que el Ministerio de Agricultura y Ganadería, firma un decreto que llama a la implementación del Plan Nacional de Pesca. Por lo que la respuesta correcta es la opción D.

49) What is the purpose of the fishing decree? To

- A) forbid aquaculture activities
- promote responsible fishing**
- C) stop fishing in the country’s oceans
- D) increase fishing practices in Costa Rica

En el texto es posible observar que dicho plan está sustentado en un artículo mediante el cual busca desarrollar políticas de protección del recurso marino promover la pesca responsable, entre otros, por lo que la respuesta correcta es la opción B

50) Who wrote the National Fishing Plan?

- A) Ministry officials
- Incopesca officials**
- C) Tico Times reporters
- D) The president of Costa Rica

En el texto se menciona que el plan fue diseñado por INCOPESCA en colaboración con el sector pesquero, por lo que la respuesta correcta es la opción B.

51) How long will the National Fishing Plan take?

- Ten years**
- B) Three years
- C) Twelve months
- D) A couple of months

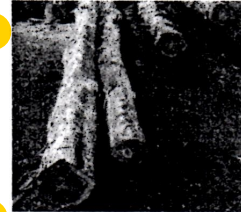
En el segundo párrafo del texto, es posible observar que se menciona que es un plan de diez años, por lo que la respuesta correcta es la opción A.

Read the text.

COSTA RICAN AUTHORITIES FIGHT ILEGAL LOGGING

Recently, authorities from the Arenal-Tempisque Conservation Area ⁵² confiscated a large amount of illegal wood and machinery and equipment used for logging. The operations to control the illegal logging will continue in the sector of Abangares, during the end and beginning of the year. All cases reported were transferred to the Public Ministry to follow the corresponding legal process.

According to authorities, the tendency is to cut down trees of large size and trees of high commercial value. ⁵³ These trees are cut ⁵⁴ down without permits and in forest areas close to rivers in which the law prohibits and punishes this activity. Logging is a common problem in many of the national parks of Costa Rica since the areas are generally extensive and the number of park rangers is insufficient. ⁵⁵



Adapted from www.news.co.cr

Choose the appropriate option to complete each sentence based on the previous text.
(Items from 52 to 55)

52) The illegal wood was confiscated by _____.

- A) the Public Ministry
- B) locals from Abangares
- C) people from Tempisque
- D) authorities of a conservation area

Al inicio del texto se menciona que recientemente, autoridades del area de conservación del Arenal - Tempisque, cofisco una gran cantidad de madera ilegal, por lo que la respuesta correcta es la opción D.

53) The law prohibits _____.

- A) visiting protected areas
- B) trading wood with permits
- C) cutting down trees close to rivers
- D) hiring certain amount of park rangers

Se menciona que los árboles son talados sin tener los permisos adecuados y en áreas forestales cercanas a los ríos, lo cual es considerado ilegal, por lo que la respuesta correcta es la opción C.

54) Illegal logging in Costa Rica is _____.

- A) not a problem
- B) already controlled by authorities
- C) not a problem in protected areas
- D) a common problem national parks

Además se hace mención de que la tala ilegal es un problema común en los parques nacionales debido a que se cuenta con áreas muy grandes y el número de guardaparques, insuficiente, por lo que la respuesta a la pregunta 54 es la opción D, mientras que de la pregunta 55 es la respuesta D.

55) A problem with the national parks is they _____.

- A) are generally small
- B) have a lot of big trees
- C) are not protected by law
- D) do not have enough park rangers