

WH QUESTIONS

Katheryn Lopez-TC089

WHAT

It is used for asking about things/ information

Example: What is your favorite animal?
What does this sentence mean?



WHICH

It is used when there is a choice

Example: Which book do you prefer?
Which country would you like to visit?

WHO

It is used for asking about people.

Example: Who is your English teacher?
Who is your favorite artist?



WHOSE

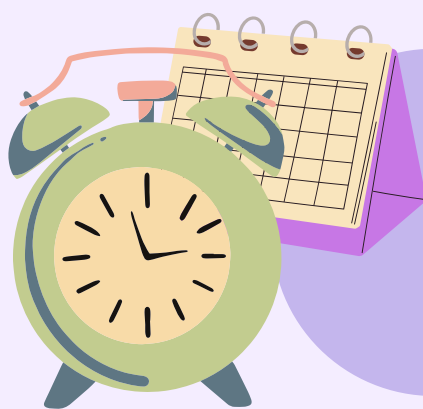
It is used for asking about possession.

Example: Whose phone is this?
Whose bag is this?

WHERE

It is used for asking about a place or location

Example: Where do you live?
Where are the keys?



WHEN

It is used for asking about time of an event or action

Example: When do you go dancing?
When is your birthday?

WHY

It is used for asking about a reason/cause.

Example: Why is she sad?
Why are you late?

HOW

It is used for asking about condition/quality/age.

Example: How was the party yesterday?
How old are you